

PROTECT YOUR FACILITY
WITH THE ULTIMATE PERIMETER
PROTECTION SOLUTION



**Radar Based Perimeter Protection
Covering over 300,000m² with 1 Radar
CE Certified**

ALL WEATHER, 24/7 WIDE AREA SURVEILLANCE

**MAGOS OFFERS RADAR BASED, COST EFFECTIVE, STATE-OF-THE ART
PERIMETER PROTECTION SOLUTIONS**

All-weather 24/7 Cost effective solution for smaller sites in need of high level security

One Radar covers over 60 acre with wide area coverage: 100° (horizontal) x 30° (vertical) detection up to 1,000 m/3,280 ft
Integrated with most VMS platforms

Auto PTZ slew-to-cue integrated with most PTZ brands

Lower initial investment and Reduced operating costs

No moving parts and Wide Area coverage

Install four sceptor-C and one PTZ Camera for all weather cost effective 360° solution covering over 800 acres

Edge processing driven extreme power & data efficiency - easy solar + wireless integration

Easy installation & commissioning with MASS Wizard site builder

Integrated with MASS+AI - minimal nuisance alarms with AI based target classification



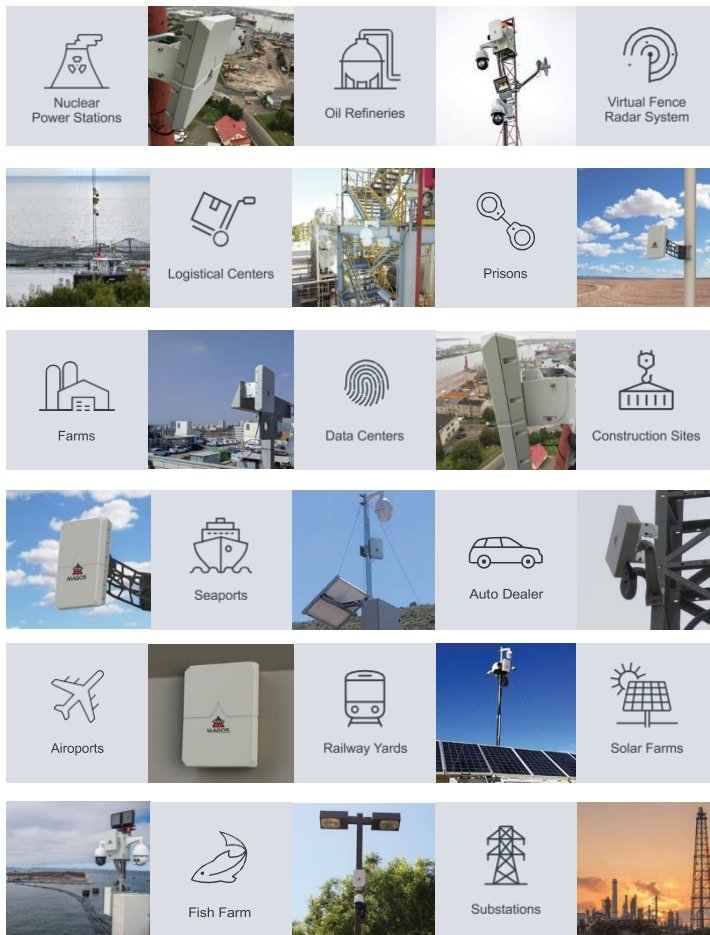
MAGOS Scepter-c

The Scepter-C is Magos latest addition to our advanced and cost effective perimeter protection detection solutions. The Scepter is most suited for large perimeters and areas that either have a wide area to cover continuously (Parking lots, Farms etc. or a very long perimeter(Airport, ports etc.).

By utilizing state of the art MIMO & Digital beam forming technology It covers an area of more than 300,000m2(>60 acres) with a detection range of up to 400m for walker 700m vehicle and yet consumes extremely low power (<5W). It boasts an ultra-high range accuracy giving it excellent performance in cluttered environments. Its small size, low power consumption and low weight make it simple to install and renders it ideal as a deployable system.

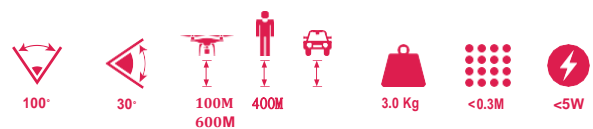


WIDE SPECTRUM OF APPLICATIONS



SPECIFICATIONS

Sensor type	High resolution MIMO digital beam-forming radar
Frequency	C-Band
Detection range	Up to 400m Human/600m Vehicle/Boat for Drone detection - 100m
No moving parts	MTBF of 50,000 hours
Built in tracker	Extremely low required bandwidth
Scan rate	2 scans per second
Azimuth coverage	100°
Elevation coverage	30°
High Range accuracy	<1.0m
Azimuth accuracy	1°
Target detection speed	0.3 - 25 m/sec
Power	48V, <5W
System interface	Ethernet, POE - IEEE 802.3at Type 1 (802.3af) & Type 2
Dimensions	250(w) x 300(h) x 80(d) mm / 9.8(w) x 11.8(h) x 3.15(d) inc
Weight	3 Kg/6.6lb
Approvals	CE, UE, cTUVus
Operating temperature	-40°- +85°C



Wide Azimuth Coverage Unparalleled Elevation Coverage Detection Range Light Weight Range Accuracy Power